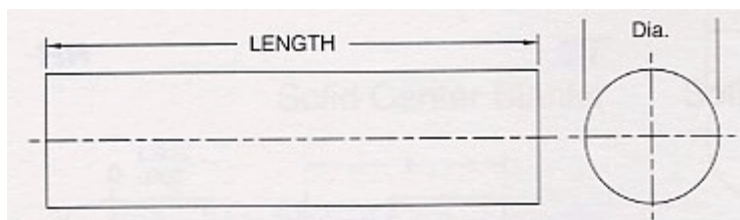
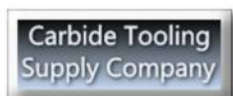


CLU

Cut to Length Unground Rod



Order No.	BK10F
3/32 x 2	
3/32 x 2-1/2	
7/64 x 2-1/2	
1/8 x 1-1/2	•
1/8 x 1-3/4	•
1/8 x 2	•
1/8 x 2-1/4	•
1/8 x 2-1/2	•
1/8 x 3	•
5/32 x 1-1/2	
5/32 x 2	
3/16 x 1-1/2	•
3/16 x 2	•
3/16 x 2-1/2	•
3/16 x 3	•
3/16 x 4	•
1/4 x 1-1/2	•
1/4 x 2	•
1/4 x 2-1/4	
1/4 x 2-1/2	•
1/4 x 3	•
1/4 x 4	•
5/16 x 2	•
5/16 x 2-1/2	•
5/16 x 3	•
5/16 x 4	•
5/16 x 6	•
3/8 x 2	•
3/8 x 2-1/2	•
3/8 x 3	•
3/8 x 3-1/2	•
3/8 x 4	•
3/8 x 6	•



Main: 248-693-9202

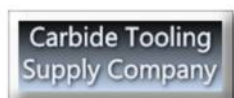
Fax: 248-693-9210

contact@carbide Toolingsupply.com

7/16 x 2-1/2	•
7/16 x 2-3/4	•
7/16 x 3	•
7/16 x 4-1/2	•
1/2 x 2-1/2	•
1/2 x 3	•
1/2 x 3-1/2	•
1/2 x 4	•
1/2 x 5	•
1/2 x 6	•
9/16 x 3	•
9/16 x 3-1/2	•
5/8 x 3	•
5/8 x 3-1/2	•
5/8 x 3-3/4	•
5/8 x 5	•
5/8 x 6	•
3/4 x 3	•
3/4 x 3-1/2	•
3/4 x 4	•
3/4 x 5	•
3/4 x 6	•
7/8 x 4	•
1 x 4	•
1 x 5	•
1 x 6	•
1 x 7	•
1 x 9	•

Standard grade is C-2 micrograin.

Special grades and length can be quoted.



Main: 248-693-9202

Fax: 248-693-9210

contact@carbide Toolingsupply.com